



Anna Glynn, *Above and Below*
Dry Tortugas National Park



[Anna Glynn, Above and Below](#)



Albert Bierstadt
Cho-looke, the
Yosemite Fall, 1864



**Carleton
Watkins**

*The Yosemite
Valley from the
“Best General
View” 1866*



Bandaloop
Amelia on Dana
Pillar from
Crossing

Marisa Williamson



MONUMENTS TO ESCAPE

WHAT IS A MONUMENT
on the New England Trail?

MOMENTS WE REMEMBER.
OTHERS WE FORGET.

MONUMENTS TO ESCAPE
is a public art project
by New England Trail
Artist-in-Residence,
Marisa Williamson.

IT IS A SERIES of interconnected
scenes and momentos,
postcards and performances,
videos and adventures,
gathered over the course of the
year
by the artist, her collaborators,
and the public.



+ SUBMIT YOUR IDEAS

+ More about the artist

+ Explore The Trail

+ On Instagram

+ Postcard Gallery

+ Map

+ Calendar

THE NEW ENGLAND
NATIONAL SCENIC TRAIL
ARTIST IN RESIDENCE





Archive of Black
Female Pain



Emily's Bloodroot



Washington Gallery



UNTITLED (Scarecrow)
2019



Bitter Metacom



Monuments to Escape
WASHINGTON GALLERY.
*New England Trail.
Hartford Conn.*





HUNTER PARKER
Dorothy Goodwin Scholar



MONUMENTS · TO · E S C A P E



NEW ENGLAND TRAIL SOUTHERN GATEWAY
ARCHIVE · OF · BLACK · FEMALE · PAIN



HUNTER PARKER

REBECCA PAPPAS





LAKE VIEW HOUSE, LAKE POCOTOPAUG, EAST HAMPTON, CONN.

CardCow.com

113159



LAKE VIEW





LAKE VIEW



THE NOYES SCHOOL OF RHYTHM FOUNDATION

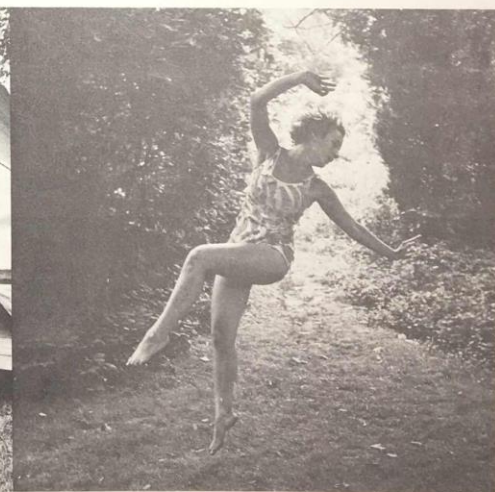


The Farmhouse

The Pavilion



One of the Single Tents



A Noyes Dancer

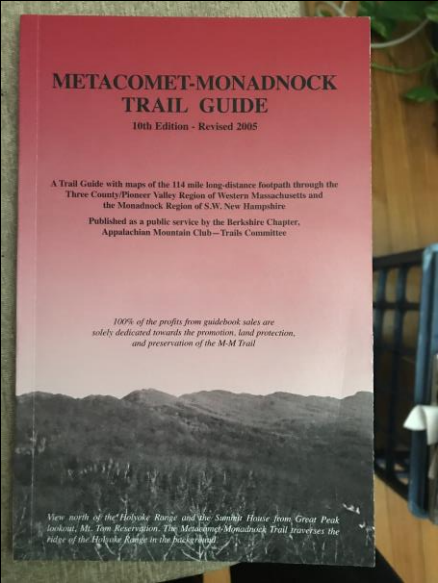


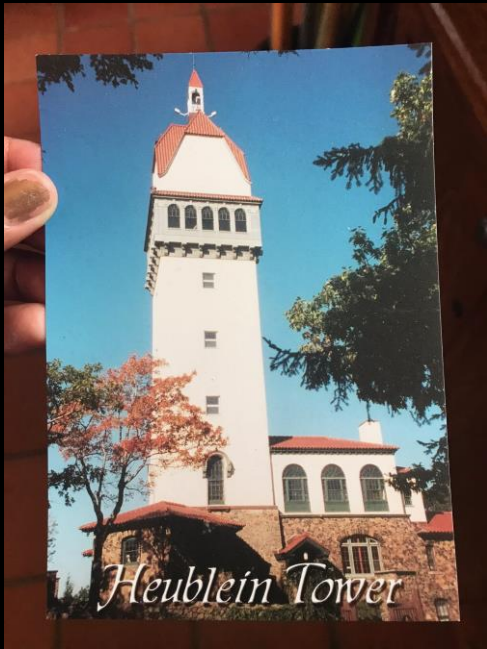
ARIEN WILKERSON

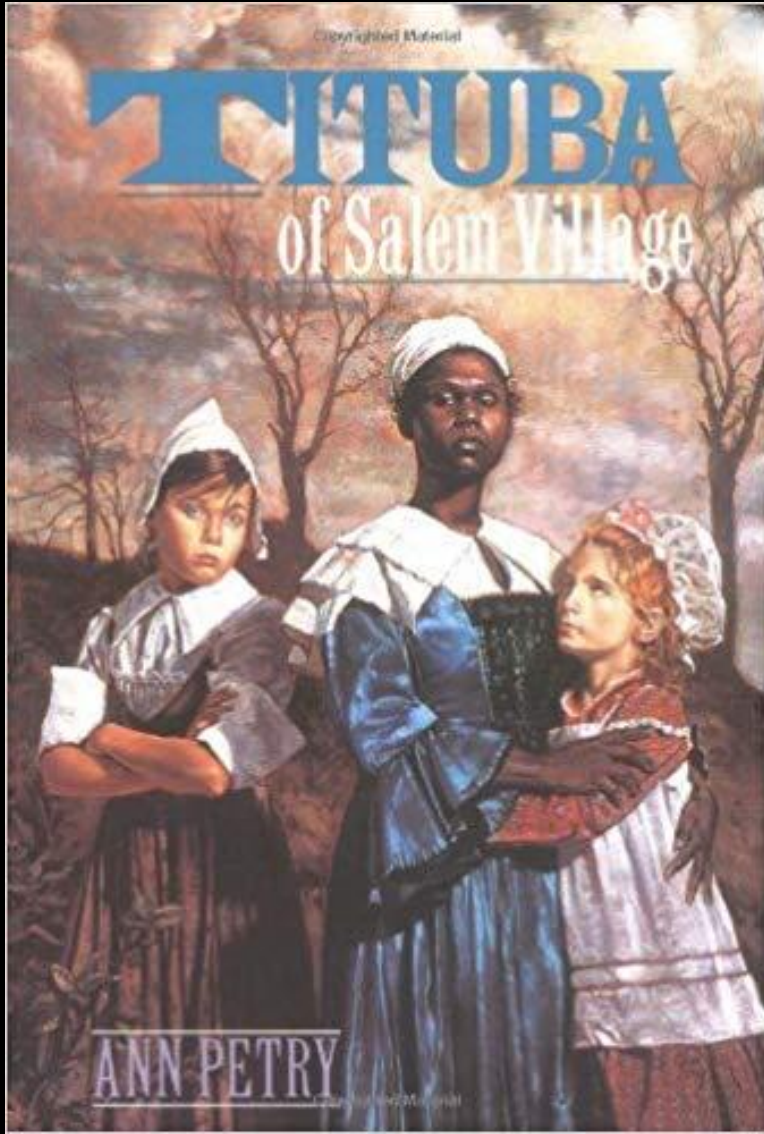
















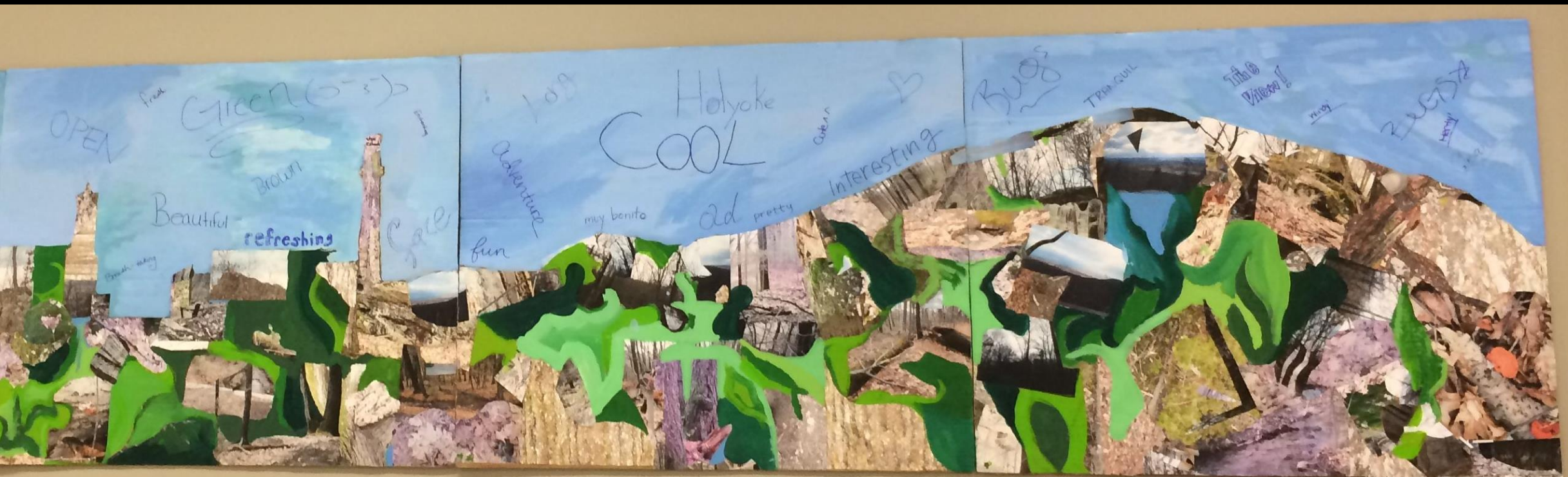
ROOM2



ESCAPE

Carolina Aragón





Making the Landscape Legible

Carolina Aragón

Assistant Professor
Landscape Architecture & Regional Planning
University of Massachusetts Amherst

Flocks

Cambridge, MA







Flocks
Cambridge, MA









Parks to People

New England Trail, NPS

Holyoke, MA











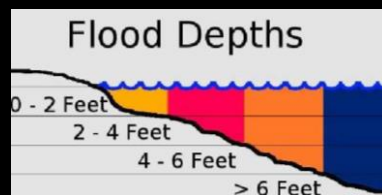


High Tide

Rose Kennedy Greenway
Boston, MA



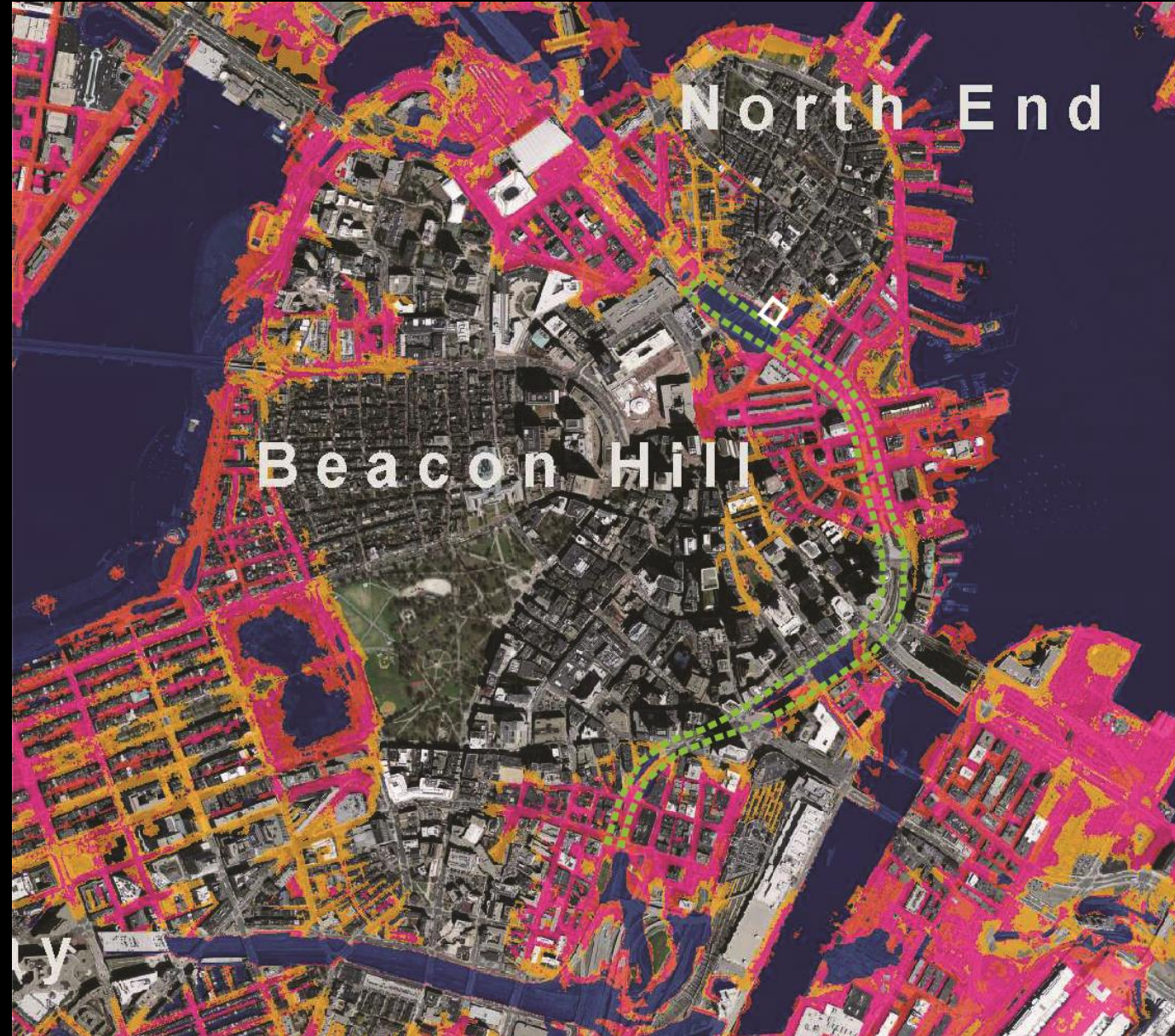
High Tide
Boston, MA



**Boston Inner
Harbor
Mean High Water
Plus 7.5 feet**

Sources: MASSGIS/
NOAA, USGS

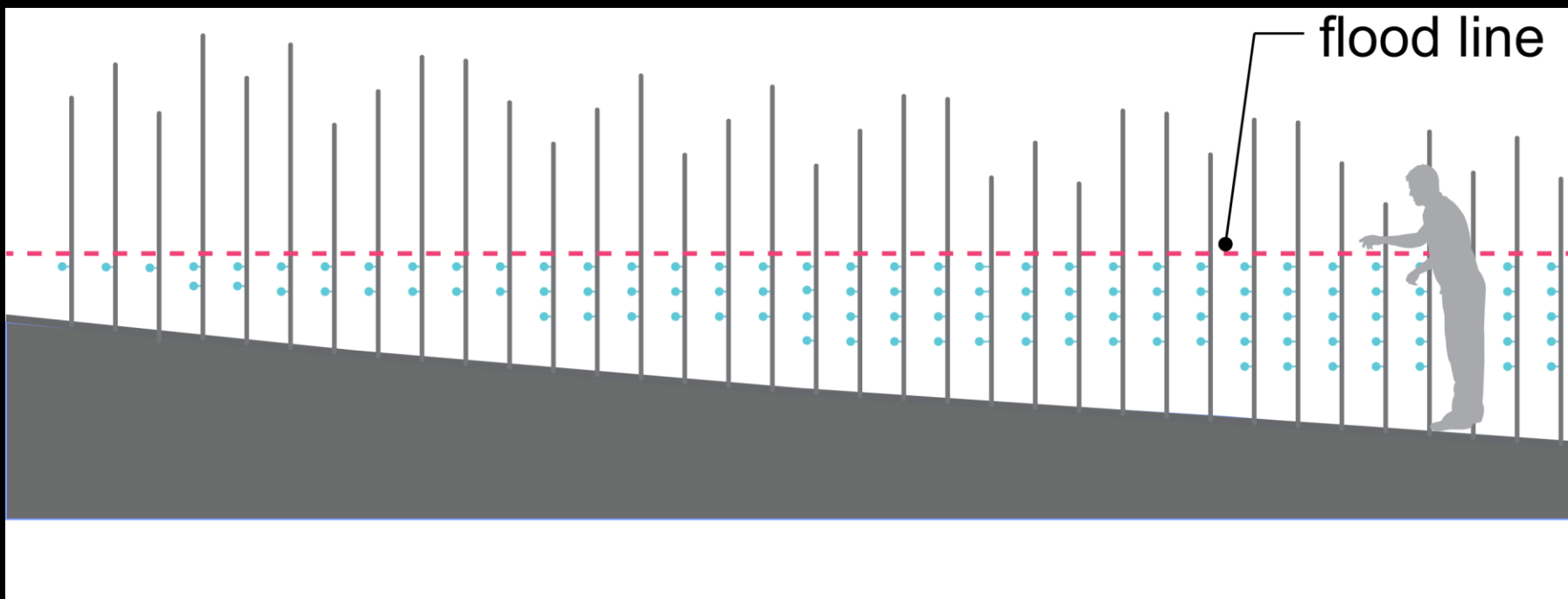
The Boston Harbor
Association



High Tide
Boston, MA



High Tide
Boston, MA





FutureWATERS
AGUASfuturas

East Boston Greenway
Boston, MA

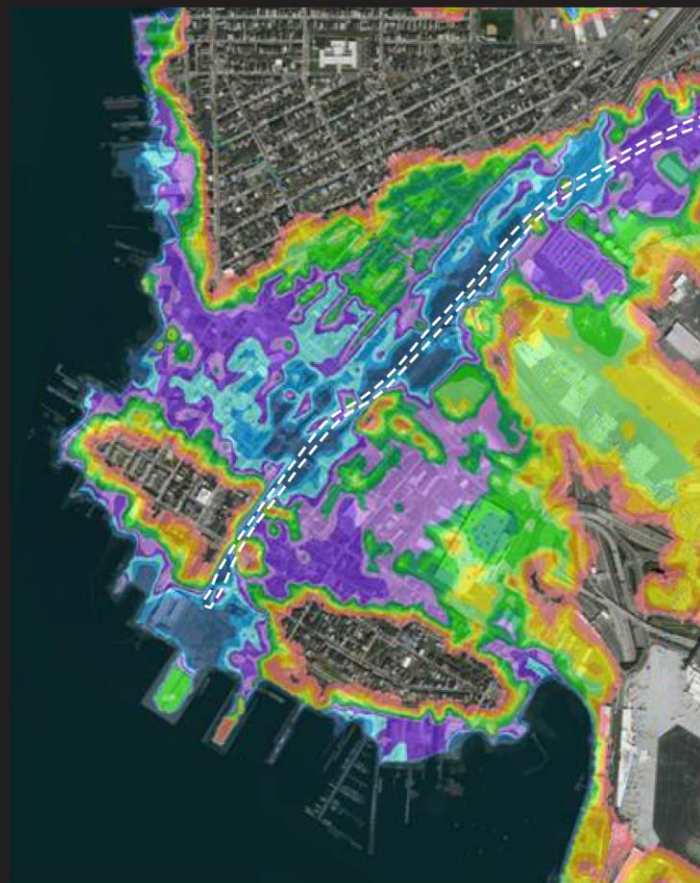


FutureWATERS | AGUASfuturas

East Boston Greenway, MA (2018)



1 ft. SLR (2050)



3 ft. SLR (2070)

East Boston
Greenway

Flood depths



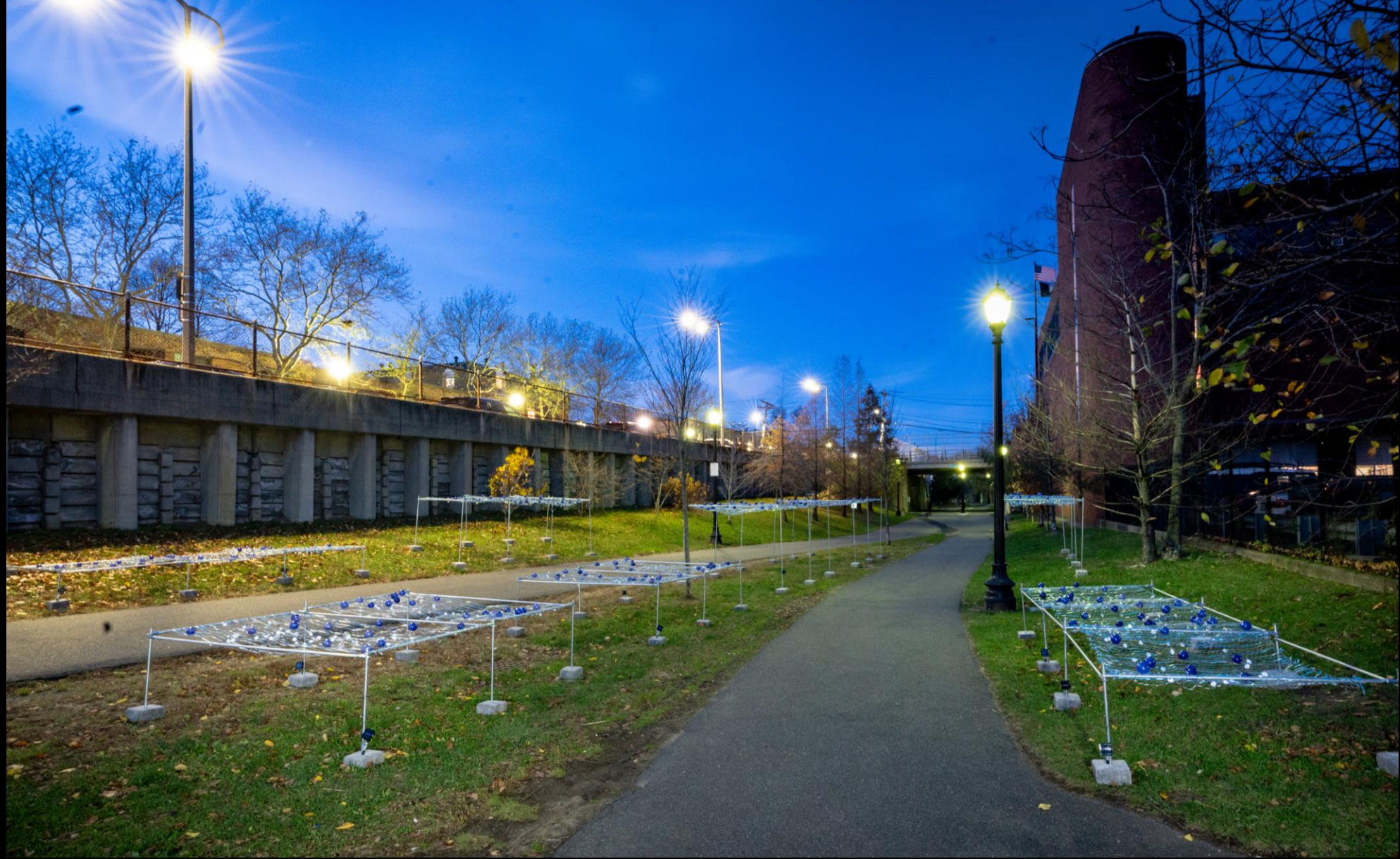
FutureWATERS | AGUASfuturas

East Boston Greenway, MA (2018)

Flooding on the East Boston Greenway

March 15, 2010
Nor'easter





FutureWATERS | AGUASfuturas
East Boston Greenway, MA (2018)

2030

55°F



2070

59°F

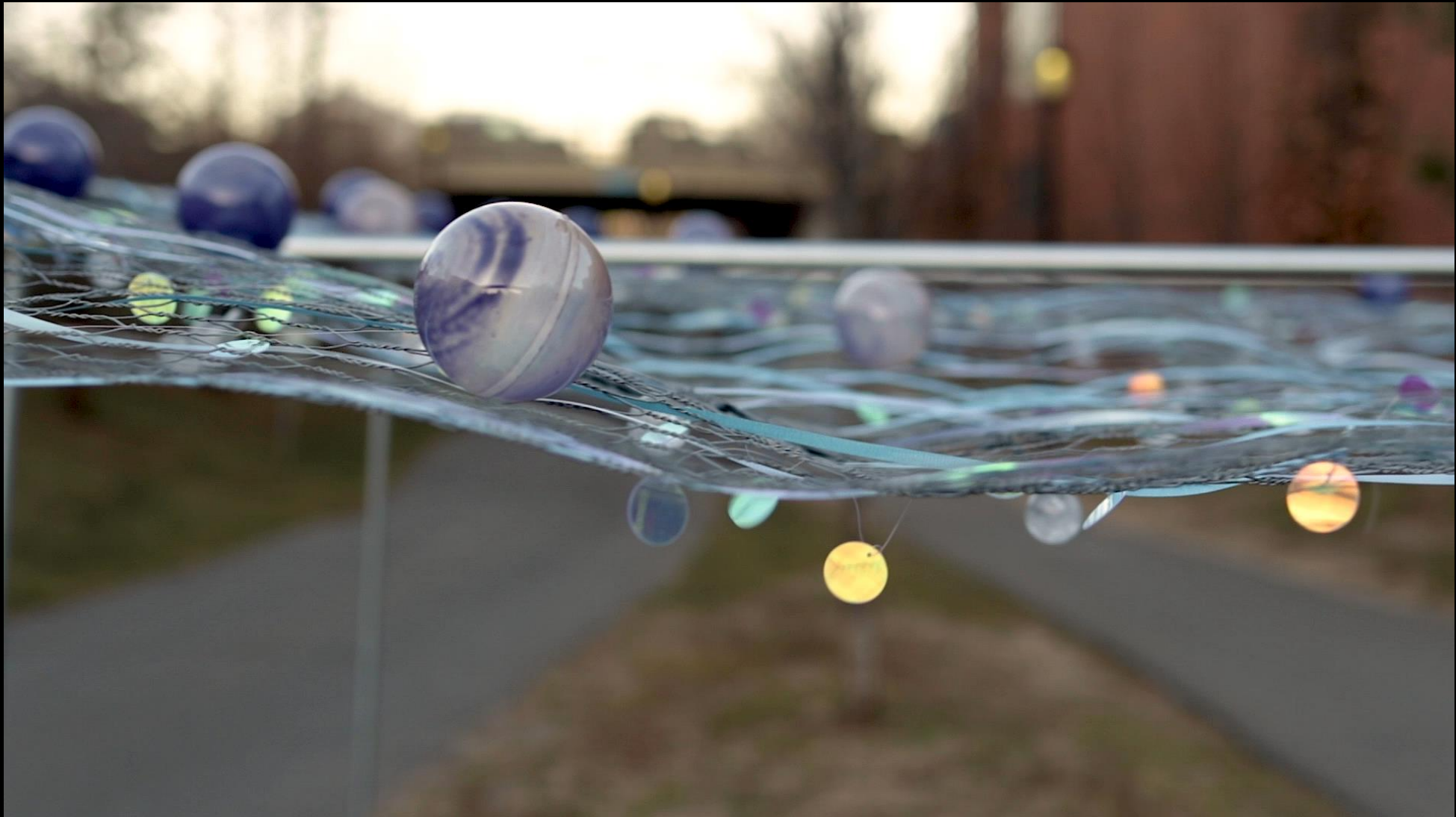


Projected high
temperatures for
Boston in November



FutureWATERS | AGUASfuturas

East Boston Greenway, MA (2018)



FutureWATERS | AGUASfuturas

East Boston Greenway, MA (2018)

Varshini Prakash 🇮🇳 @VarshPrakash

.@AyannaPressley honored that you rep me in MA-07. This community installation shows how high waters will rise in East Boston in the coming yrs.

I would drown.

Can you back @Ocasio2018 @justicedems & @sunrisemvmt's resolution for a #GreenNewDeal?



♥ 1,001 3:06 PM - Nov 17, 2018

Varshini Prakash

"This community installation shows how high waters will rise in East Boston in the coming years.

I would drown.

Ayanna Pressley

"I plan to fight for equitable investment in #resilience #mitigation esp those places most vulnerable to sea level ie #East Boston..."



Ben Cosgrove

